



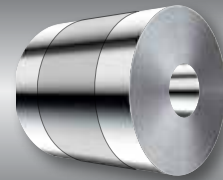
Steel Tailored Blanks



Aluminum Tailored Blanks



Global



Tailored Coils



Hot Formed Tailored Blanks

# TWB Company LLC

A Worthington Steel and WISCO Tailored Blanks Joint Venture

Weight Savings

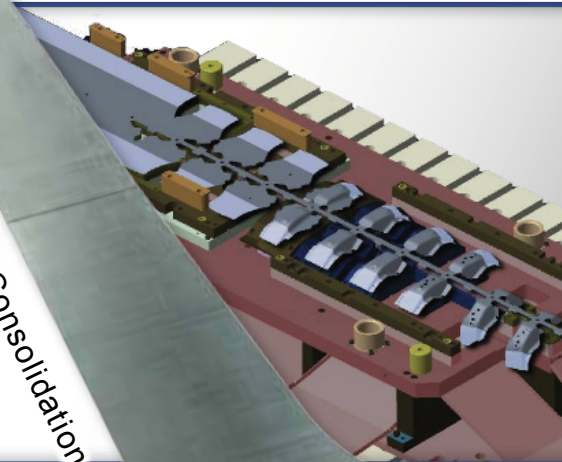
Material Utilization

Part Consolidation

Manufacturing Development

Product Development

Improved Performance



Tailored solutions to: save weight, reduce cost, improve material utilization and consolidate parts.



## Tailored Product Benefits

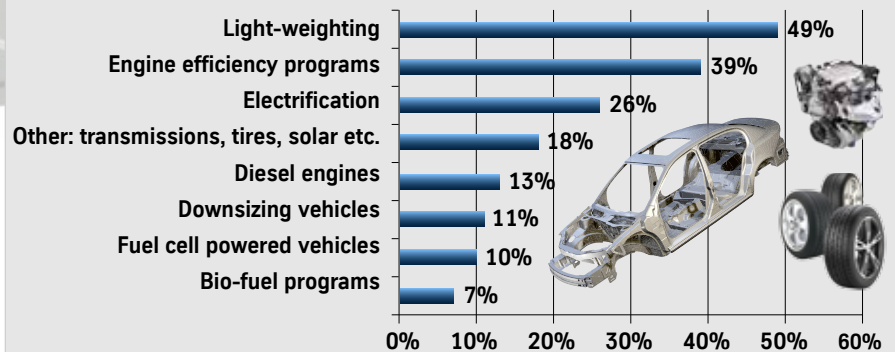
- Industry focus cost effective weight savings is supported with part integration and optimization

### Tailored Product Opportunities

Benefit	Part Consolidation	Part Optimization	Material Utilization
Weight Savings	✓	✓	
Cost Savings	✓	✓	✓
Investment Savings	✓		
Improved Product Performance	✓	✓	
Improved Manufacturing	✓		
Improved Dimensional Control	✓		

### Industry Trends & Drivers

#### Light-weighting Leads Fuel Efficiency Technologies

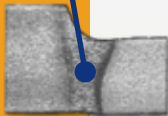


## TWB Advantage

- Four Products; TB's, TWC's, HFTB's and ALTB's
- Industry leading quality levels (single digit PPM's)
- Linear & non-linear capabilities
- Each weld is computer monitored and serialized
- Proprietary weld profile monitoring and magnetic flux leakage detection (MFL) systems
- Dedicated field service engineers that support your operations

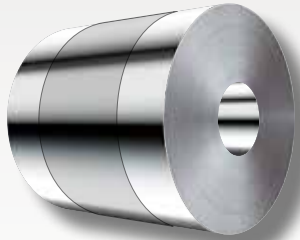
#### Material Combinations Include:

- Stainless, CR, HR, DP, TRIP, CP, AHSS, PHS1500, HSLA500 - coated and non-coated
- 5000, 6000 and 7000 series Aluminum



## TWB Specialized Services

The TWB team provides customers with advanced technological support in all aspects of the use of tailor welded products. TWB product, manufacturing and technical service engineers assist customers from product development through production implementation. TWB is well positioned to meet the requirements of the highly competitive automotive industry. TWB continues to strengthen its position as the premier supplier of tailor welded products.



TWC's



ALTB's

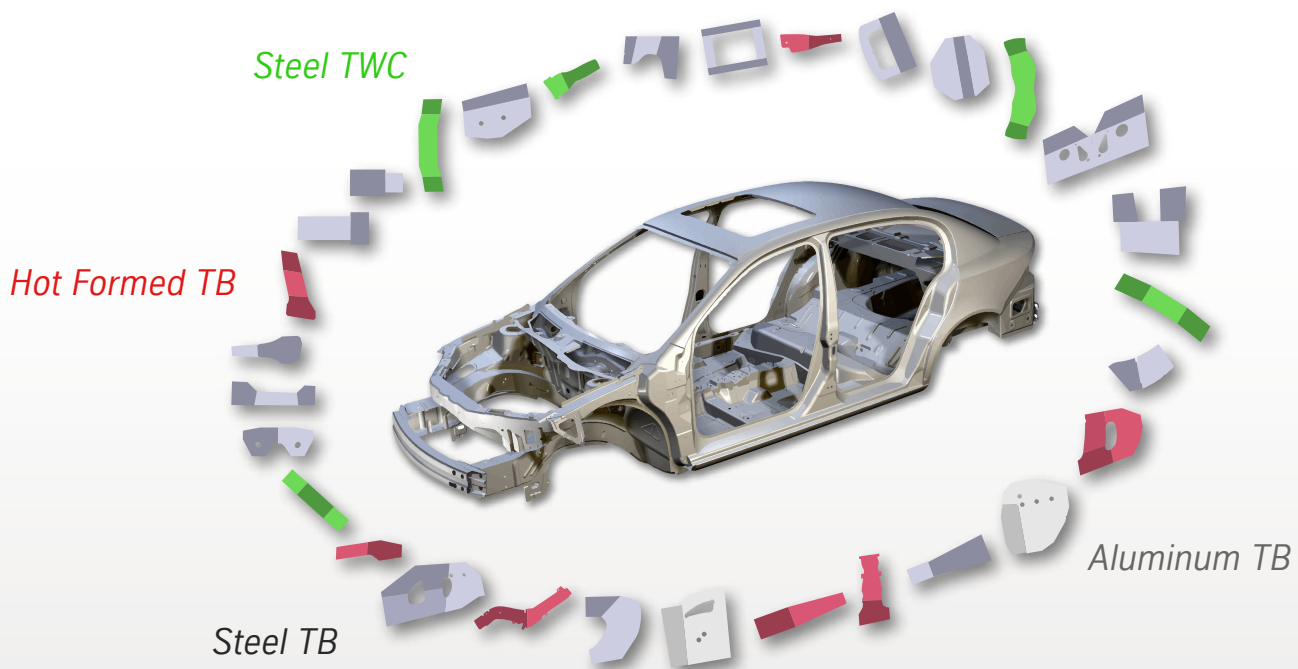


HFTB's



TB's

## Tailor Welded Product Applications



**65 kg of potential weight savings with tailored products**

There are more than 150 combinations of tailored product potential applications in most automotive body systems today. With increasing material mix and the need to lower vehicle mass, tailored products offer a cost effective approach toward meeting vehicle requirements for lower mass, lower investment and optimized cost.



Monroe, Michigan, USA – Opened 1995



Ramos Arizpe, Coahuila, Mexico – Opened 2000



Cuautlancingo, Puebla, Mexico – Opened 2001



Hermosillo, Sonora, Mexico – Opened 2005



Prattville, Alabama, USA – Opened 2007



Smyrna, Tennessee, USA – Opened 2012



Silao, Guanajuato, Mexico – Opened 2012



Cambridge, Ontario, Canada – Opened 2014



Nashville, Tennessee, USA – Opened 2015



Glasgow, Kentucky, USA – Opened 2015

**TWB LOCATIONS**

TWB facilities are certified by ISO / TS 16949, ISO 14001 and Q1

TWB, formed in 1992 as a joint venture between Worthington Industries and ThyssenKrupp Steel has held an industry leading position since its creation. WISCO purchased ThyssenKrupp's shares in 2013 replacing them as the JV partner. In addition, WISCO Tailored Blanks has 9 tailored product facilities throughout Europe and Asia that TWB leverages for technological and customer support. Combined, TWB and WISCO Tailored Blanks create the largest and most advanced tailor welded product company in the world.

TWB Company invites collaboration with customers on application projects to achieve cost effective weight savings on a global scale.

**TWB Company LLC**

1600 Nadeau Road  
 Monroe, Michigan 48162  
 USA

**1 (734) 289-6400**

sales@twbcompany.com  
 www.twbcompany.com

